



ANATOL

www.anatol.com

QUICK LIGHT PRO

UV LED EXPOSURE UNIT



Convenient Combinations

- Pair the Quick Light PRO exposure unit with a screen rack or drying cabinet for maximum convenience
- Screen rack and screen drying cabinet feature heavy-duty casters for mobility
- Keep your screen preparation area neat and organized

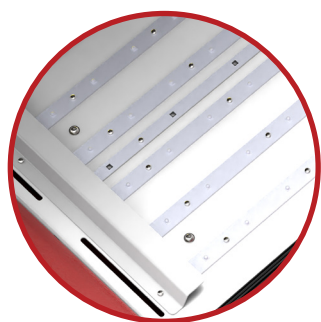
QUICK LIGHT PRO

STANDARD FEATURES



Design and Construction

- ¼" (6.4mm) thick optically clear plate glass
- Controlled ventilation within the light cabinet provides filtered ambient air
- Fully-enclosed, heavy duty steel cabinet built for durability, longevity and operational comfort
- Gas springs for easy opening and closing of the frame with blanket
- Removable covers provide easy access to internal components for cleaning and replacement



UV LED LIGHT

Exposes screens quickly and in high resolution for crisp screen prints



Blanket and Vacuum

- Blanket made of flexible material to provide optimal vacuum seal around screen frame, film positive and glass for high resolution exposure



Light Source

- UV LEDs will dramatically reduce exposure time through optimized light saturation
- High-efficiency UV LED system reduces power consumption to half of metal halide unit requirements
- Yellow LED inspection strips
- LEDs designed to last 50,000 hours or more



Control Interface

- Digital control with 4.3" touch screen
- Independent vacuum draw delay and exposure time thresholds
- Light automatically turns yellow when the cover is opened

MODEL	VACUUM PUMP	MAX SCREEN FRAME SIZE	MAX SIZE OF ARME SYSTEM	OUTER DIMENSIONS WxDxH (+HEIGHT WITH OPEN FRAME)	ELECTRICAL REQUIREMENTS
QUICK LIGHT 23x31	140 L/MIN	23"x 31" (58cm x 79cm)	21"x 28" (53cm x 71cm)	48.1"x36.3"x37.4" (*61.1") 122cm x 92cm x 95cm (155cm*)	1 Phase, 110V, 6A 1 Phase, 208-230V, 3A
QUICK LIGHT 26x36	140 L/MIN	26"x 36" (66cm x 91cm)	26"x 36" (66cm x 91cm)	54.5"x40.5"x37.4" (*64.3") 138.5cm x 103cm x 95cm (163cm*)	1 Phase, 110V, 9A 1 Phase, 208-230V, 5A
QUICK LIGHT 36x48	140 L/MIN X2	36"x 48" (91.5cm x 122cm)	30"x 45" (76cm x 114cm) Double 21"x 28" (2 x 53cm x 71cm)	62.9"x46.2"x37.4" (*68.1") 156cm x 117cm x 95cm (173cm*)	1 Phase, 110V, 15A 1 Phase, 208-230V, 8A

*Height in parentheses is with the lid with vacuum blanket open

Compatible with the Anatol ARME pre-registration system (not included - must be ordered separately)



Anatol Equipment Manufacturing Co.
1429 S Shields Dr, Waukegan, IL 600851.
847.367.9760 sales@anatol.com